

**CHARVIES**  
浙翔机械科技



# OUR GROUP

## OUR GROUP



PARENT COMPANY, 30 years experience in surface treatment system.



OVERSEAS SALES COMPANY, focus on oversea market more than 5 years



ROBOT COMPANY, provide robot and robot application system.



WATER TREATMENT COMPANY, provide RO water and WWT system.



POWDER COMPANY, provide powder for powder coating.



Aluminum wheels, metal process, etc.

# OUR GROUP



We are a group company with more than 30 years of experience within the industry of surface treatment dedicated to deliver high quality and environmental friendly finishing system.

We have helped our customers built more than 1000 coating lines, include almost all of the industry field.

In our factory, we have more than 3million US value production equipment, also, we have 30+ senior engineers, could help customers get quality and high technology advanced coating line.

We are the Coating Industry National Standard drafter.

**Found In**  
1988

**Employee**  
200+

**Plant Space**  
50,000m<sup>2</sup>+

**Annual Sales**  
40Million US Dollars

**Export Countries**  
20+

**Position In Field**  
TOP5 In China



# OUR CUSTOMER




# OUR WORLD MARKET


# OUR PRODUCT



## Pre-treatment System

Clean the surface and provide crystal coating layer (Phosphating/ Nano ceramic/Oxsilan)



## Oven

Provide high and stable temperature for curing the paint layer and drying the water.



## Application System

Base on customer requirement, we provide different kind of surface coating system. Include powder coating, liquid paint coating, electrophoresis coating(e-coat)



## Conveyor System

Manual, Mono, power & free system, floor conveyor system.



## Control System

Intelligent monitor, HMI+PLC, PC VPN control.



## Water and Gas treatment System

Base on customer local standard, provide waster gas and water treatment system

# TUNNEL TYPE - PRE-TREATMENT SYSTEM

This type pre-treatment system suitable for small and medium-size product surface treatment.  
Base on customer capacity requirement, max could design for speed 8m/min coating line.

## Tunnel Pre-treatment

In spray/tunnel pre-treatment system, the product passes through a tunnel with a number of process stages preparing the product for the application process. The process stages are designed to the specific type of product and chemicals.

The tunnel pretreatment design is customized on the basis of the product. Temperature and materials are taken into careful consideration. Pretreatment system are insulated to prevent condensation and to decrease heat loss.



# IMMERSION TYPE - PRE-TREATMENT SYSTEM

This type pre-treatment system suitable for huge product or complex product.

## Immersion Pre-treatment

In immersion pre-treatment system, the product dip into chemical with a number of process stages preparing the product for the application process.

The process stages are designed to the specific type of product and chemicals.

The immersion pretreatment design is customized on the basis of the product. Temperature and materials are taken into careful consideration.

Pretreatment system are insulated to prevent condensation and to decrease heat loss.



# OVEN

烘干炉

Oven is for drying, curing, baking the material of surface.

Base on customer capacity requirement and space , we could design the most suitable oven.

## OVEN

The oven include heating booth, air circulation system, insulation room etc.

According to customer requirement, we could provide 50°C-850°C oven.  
Also the energy could use: Diesel, natural gas, LPG, CNG, electric etc.

We manufacture quality ovens with 3D designed ducts for optimal heat distribution, which ensure our well-known even temperature distribution.





# POWDER COATING BOOTH

Mono cyclone type quick color change powder coating booth.

## Mono Cyclone Powder Coating Booth

The powder coating booth is use for coating product. According to the structure of product, coating form could be designed all in automatic , semi-automatic, manual. Mono Cyclone type powder recycle system is usually for multi color coating. Use this system, customer could change color in 30mins. Powder recycle rate  $\geq 95\%$



# POWDER COATING BOOTH

Cartridge Type Powder Coating Booth, suitable for enamel coating also.

## Cartridge Type Powder Coating Booth

Cartridge type recycle system can be used for multicolor coating and mass production,

If customer need to coat more than 1 color for product, this recycle system could be quickly cleaned .

How many colors customer needed , how many bag type filter element filter recycle unit should be purchased.

Powder recycle rate  $\geq 99\%$



# LIQUID PAINTING BOOTH

Use for liquid pain coating.

## Liquid Painting Booth

- Fresh Air Supply System
- Side-draft, cross-draft, down-draft or multi-level air flow
- 3-axis air-powdered man-lifts
- Conservative air flow
- High efficiency water-wash
- Dry filter
- High density lighting
- Designed for robotic use
- Combination spray and cure
- VFD controlled fan and air flow control



# E-COATING SYSTEM

Use for e-coating dip coating.

## E-coating System

1. Conveyor system  
Continuous conveyor system, hoist conveyor system
2. Pretreatment system
3. E-coating dip tank
4. Liquid stir system
4. Recifier
5. Ultrafiltration system
6. Anode system
7. Pure water system
8. Constant temperature system
9. After E-coating clean system
10. Custom Combinations

2009 10 10

# INDUSTRIAL APPLICATIONS

1 Household Electrical Appliance Industry

2 Automobile Industry

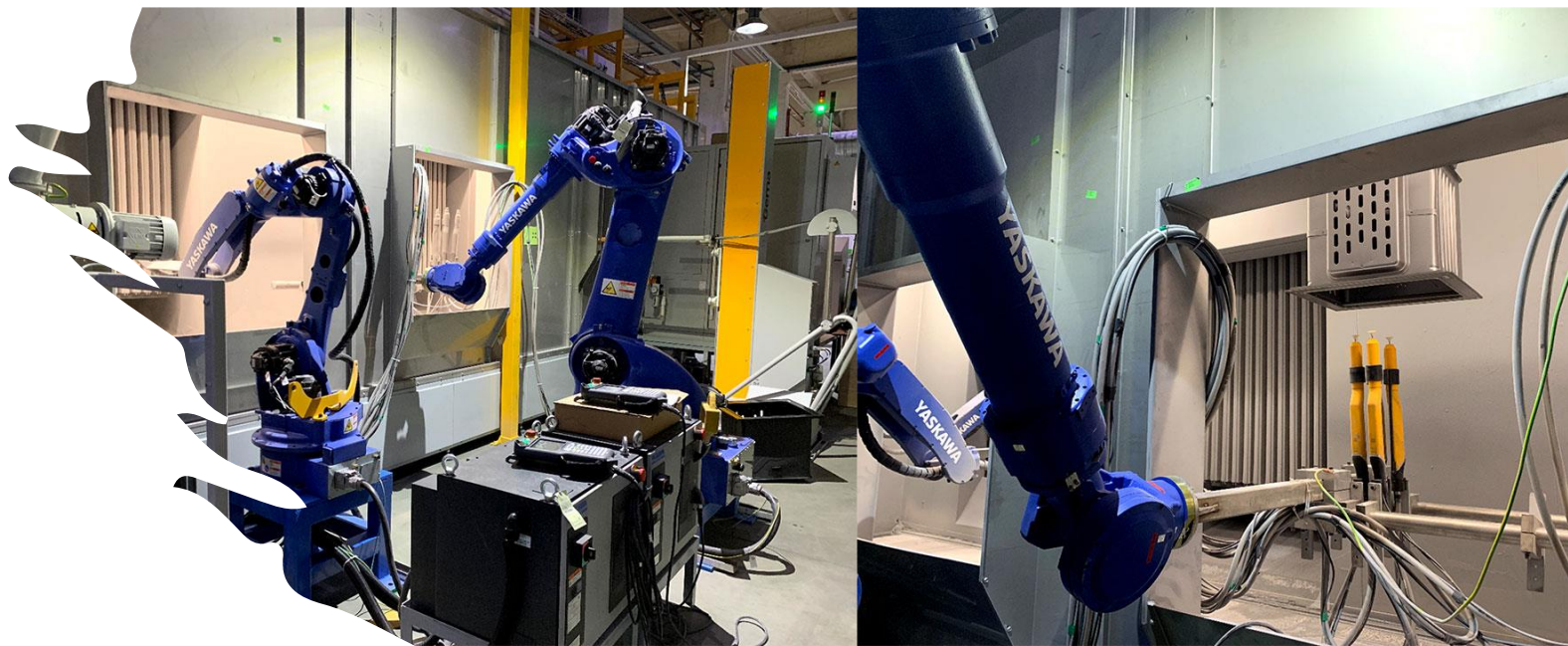
3 Furniture Industry

4 Heavy Equipment Industry

6 Other Industry



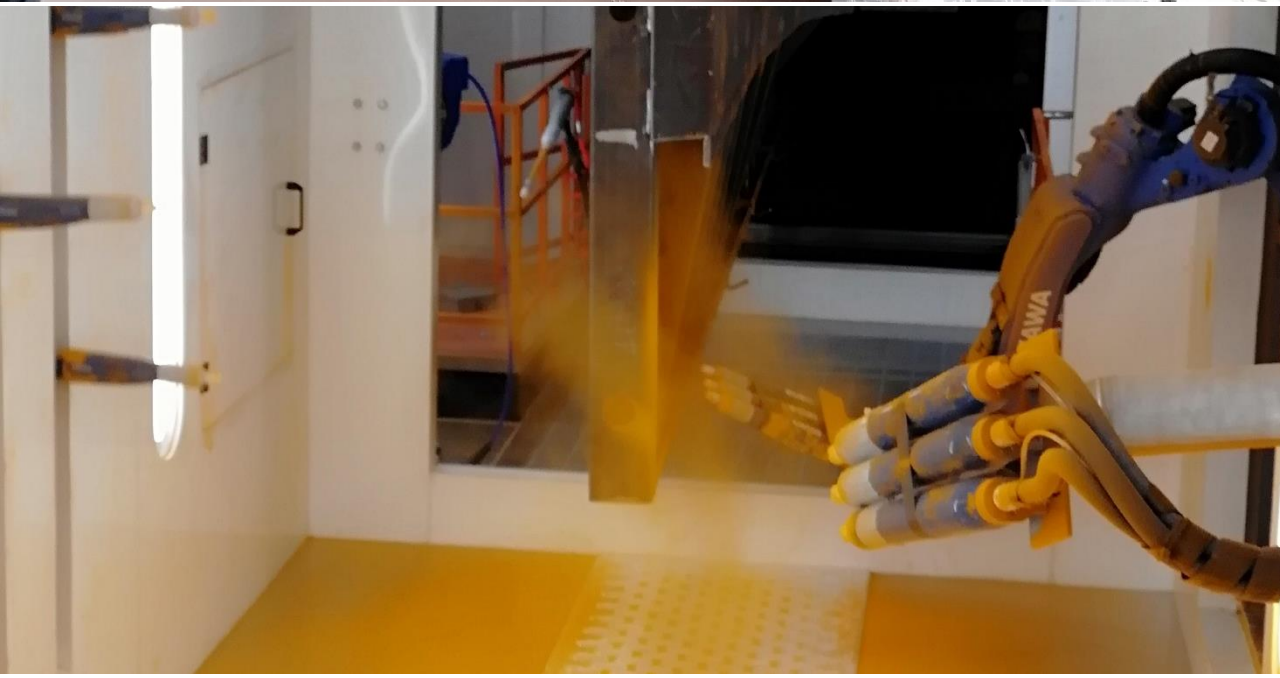
# PROJECT PHOTOS



# OVEN BOX ENAMEL COATING LINE-PROJECT PHOTO

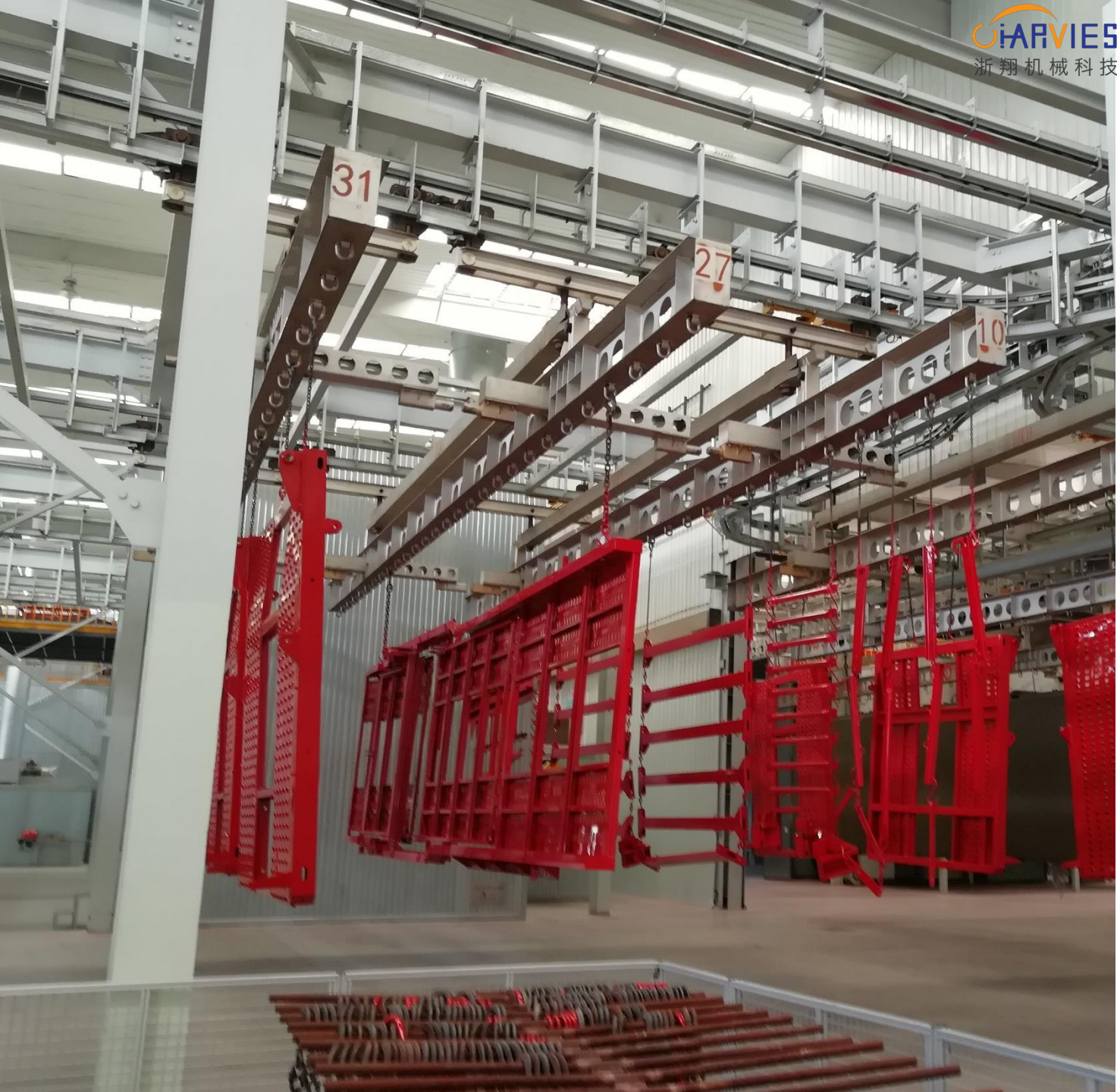


# TRUCK FRAME COATING LINE





# TRUCK FRAME COATING LINE



# BOILER POWDER COATING LINE-PROJECT PHOTO



# ELEVATOR POWDER COATING LINE-PROJECT PHOTO



# HOODS POWDER COATING LINE-PROJECT PHOTO



# FIRE EXTINGUISHER POWDER COATING LINE-PROJECT PHOTO



# FREEZER POWDER COATING LINE-PROJECT PHOTO



# BURN OFF OVEN- clean the hook



喷漆、喷粉行业需要返工产品

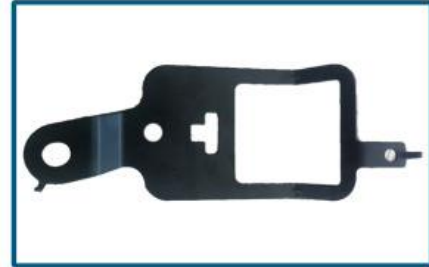


产品处理前



产品处理后

电泳、电镀行业需要返工产品



产品处理前



产品处理后

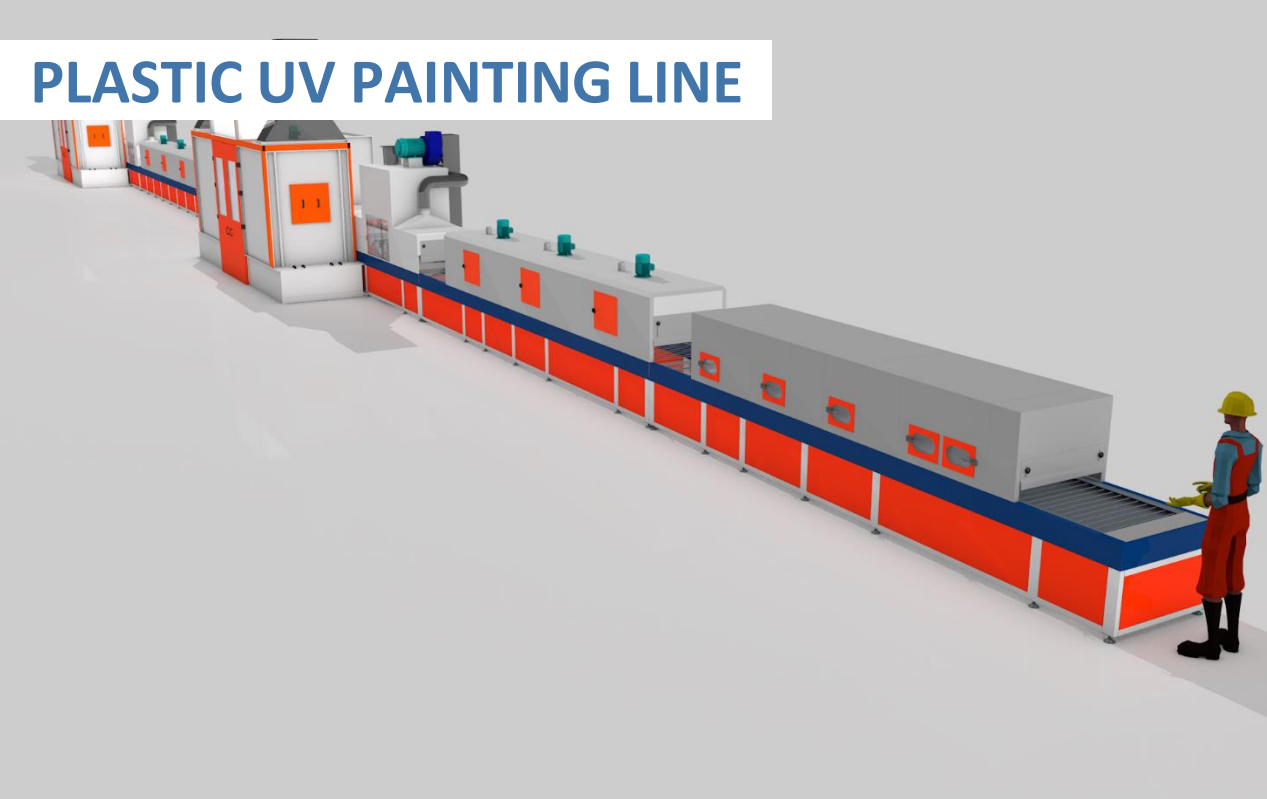
应用图例

# MOTO PAINTING LINE

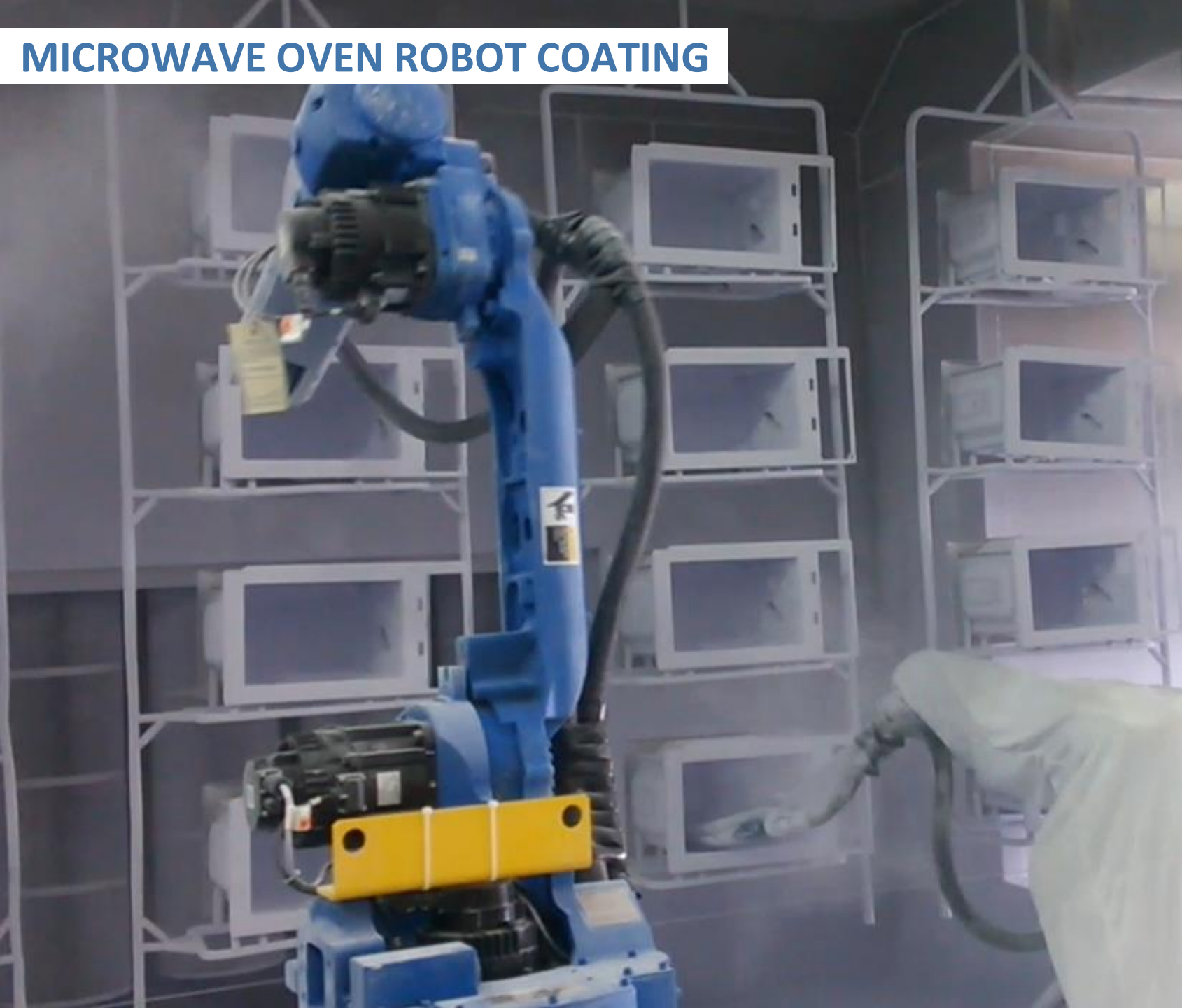




# PLASTIC UV PAINTING LINE



# MICROWAVE OVEN ROBOT COATING



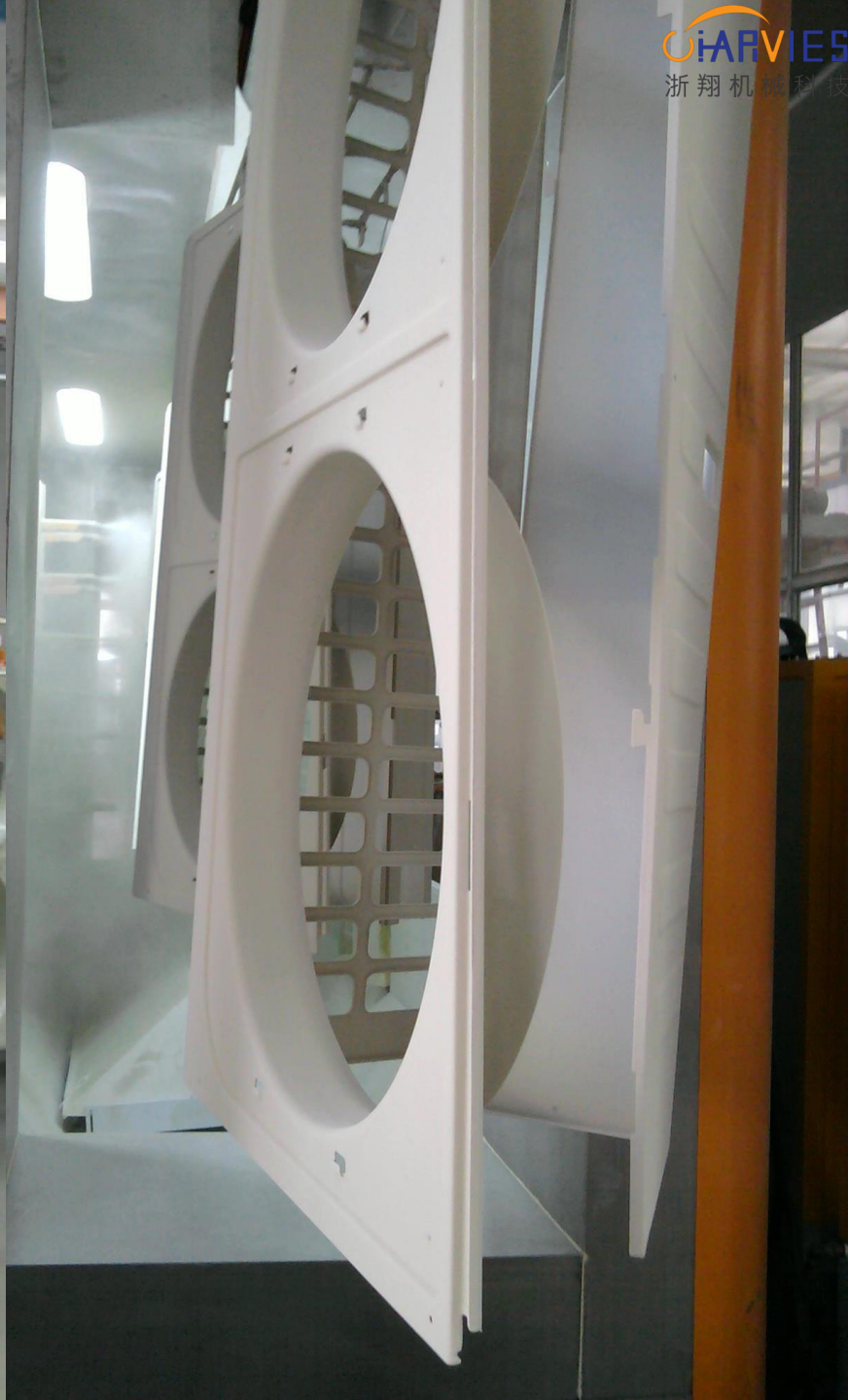
# BUMPER PAINT COATING LINE-PROJECT PHOTO



# TANK PAINTING LINE



# WASHING MACHINE POWDER COATING LINE-PROJECT PHOTO



# RADIATOR E-COATING LINE



# WELCOME TO VISIT US

We company located in Deqing County, Zhejiang Province, we have very famous mountain in our city, Mogan Mountain, which is NEW YORK TIMES SELECTED 45 PLACES WORTH VISITING IN THE WORLD

